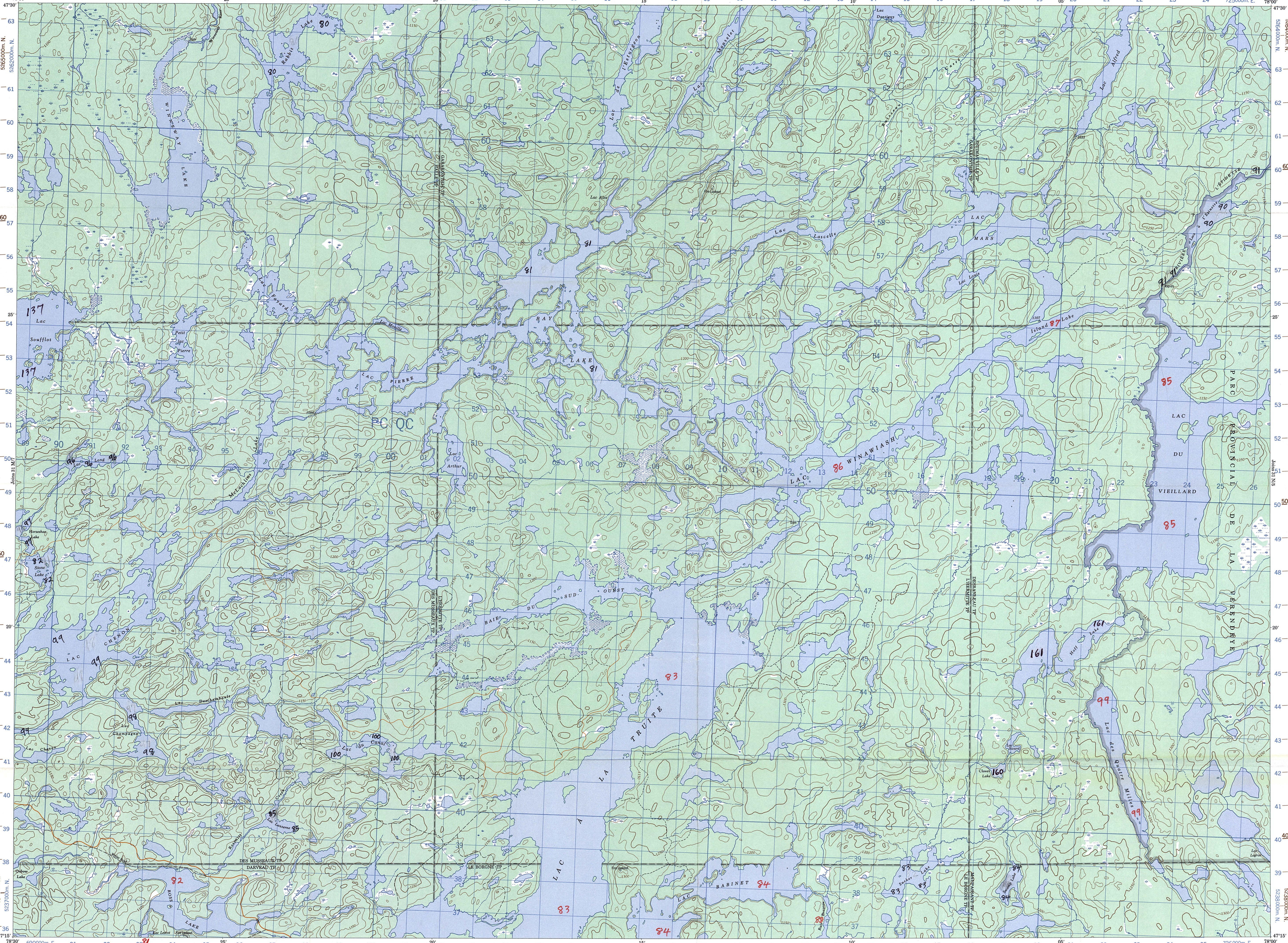
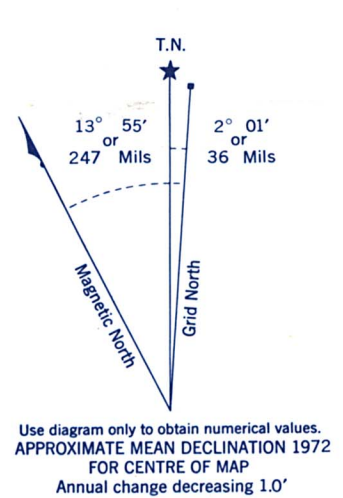
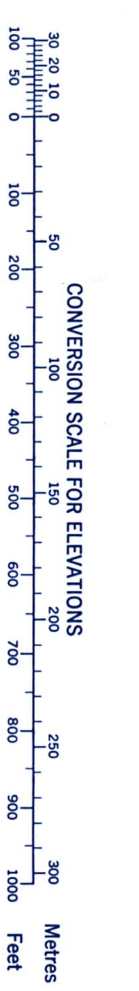


CANADA

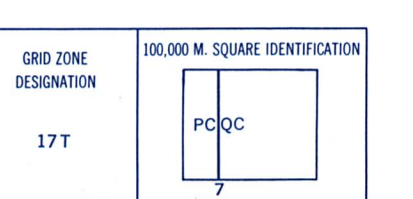
EDITION 2



Refer to this map as: 31 M/8 EDITION 2 M.S.E. SERIES A 761



ONE THOUSAND METRE UNIVERSAL TRANSVERSE MERCATOR GRID ZONE 17



EXAMPLE OF METHOD USED TO GIVE A REFERENCE TO NEAREST 100 METRES THE FOLLOWING COORDINATES IS SHOWN ONLY AND DOES NOT REFER TO A POINT ON THIS MAP

REFERENCE POINT	CHURCH (as above)
EASTING	Red number on grid line immediately to left of point Easting north of a square from this line eastward to point
NORTHING	Red number on grid line immediately below point Easting north of a square from this line northward to point

EXAMPLE MILITARY GRID REFERENCE 979691  
Nearest usable grid reference 100,000 metres (about 62 miles)

BROWN NUMBERED TICKS INDICATE THE 1000 METRE U.T.M. GRID ZONE 18

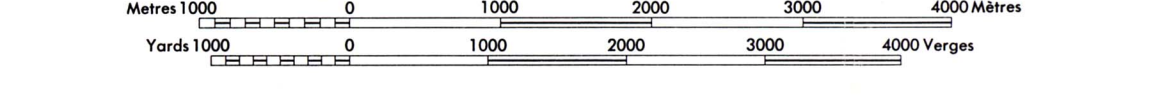
Produced by the SURVEYS AND MAPPING BRANCH, DEPARTMENT OF ENERGY, MINES AND RESOURCES. Issued from photographic plates in 1981. Culture check 1976 Printed 1973.

Copies may be obtained from the Canada Map Office, Department of Energy, Mines and Resources, Ottawa, or your nearest map dealer.

Roads: loose or stabilized surface, all weather; loose surface, dry weather and unclassified streets; cart track; trail or portage.

Routes: gravel aggloméré, toute saison; de gravier, temps sec et ruis, hors saison; sentier ou portage.

31 M/8 Scale 1:50,000 Échelle



This Professional Map is equivalent to a standard map in accuracy of content.

Certain names on this map are not yet official. Corrections or additions are invited by the Surveys and Mapping Branch.

Cette carte professionnelle équivaut à une carte régulière au point de vue précision de l'information.

Certains noms inscrits sur cette carte ne sont pas encore officiels. La Direction des levés et de la cartographie souhaite que son public lui fasse connaître ses corrections et additions.

Établi par la DIRECTION DES LEVÉS ET DE LA CARTOGRAPHIE, MINISTÈRE DE L'ÉNERGIE, DES MINES ET DES RESSOURCES. Mis à jour à l'aide de photographies aériennes prises en 1972. Vérification des ouvrages en 1976. Imprimé en 1973.

Ces cartes sont en vente au Bureau des Cartes du Canada, Ministère de l'Énergie, des Mines et des Ressources, Ottawa, ou chez le vendeur le plus près.

26456-ENQUÊTE KIPAWA (PROJET 2) YOUNG, NORMAN - 1981 DOSSIER DES ENQUÊTES EN MILIEU AMÉRINDIEN