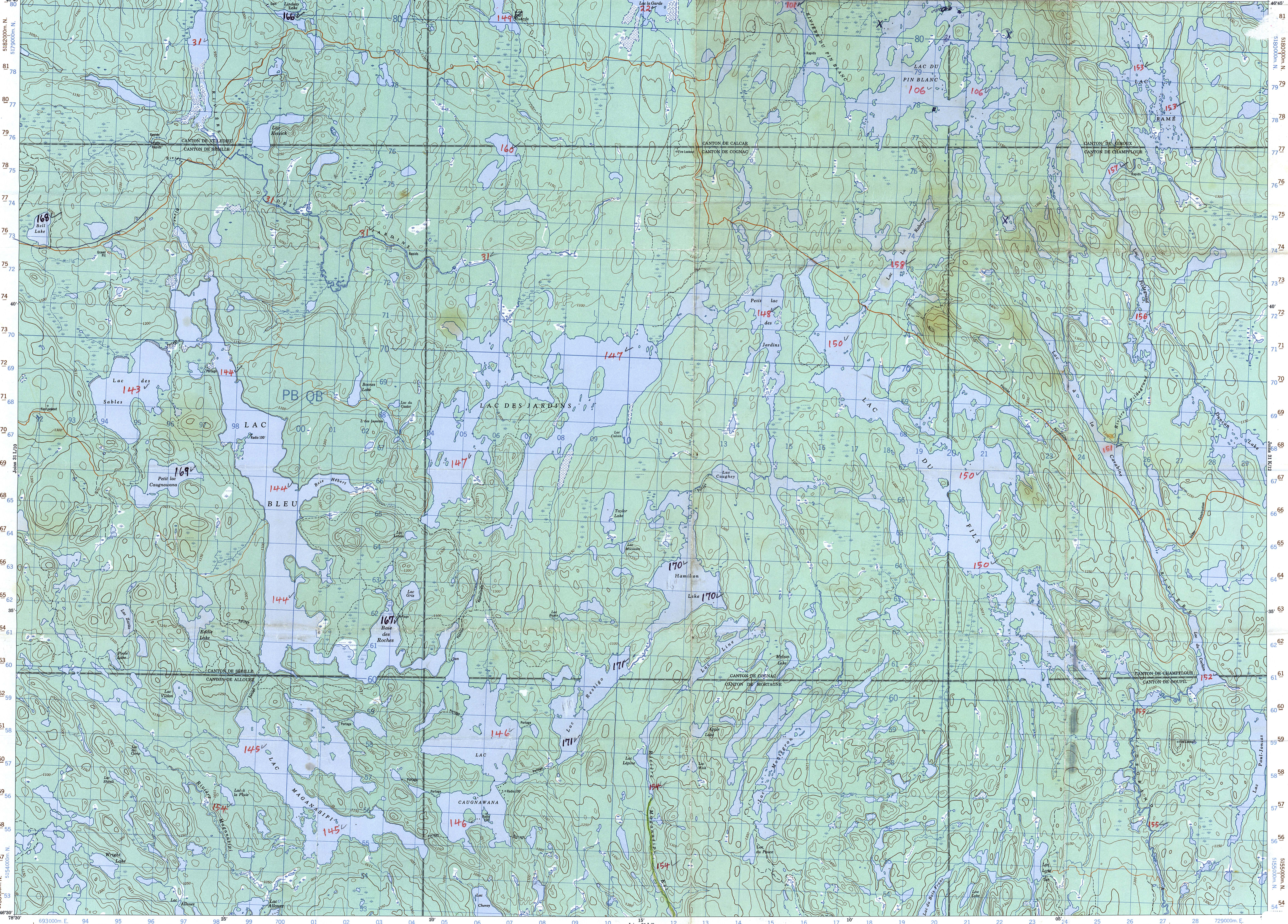
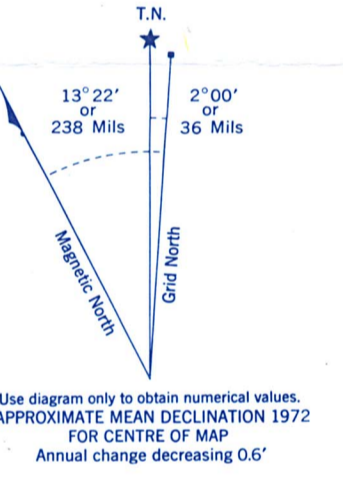


CANADA

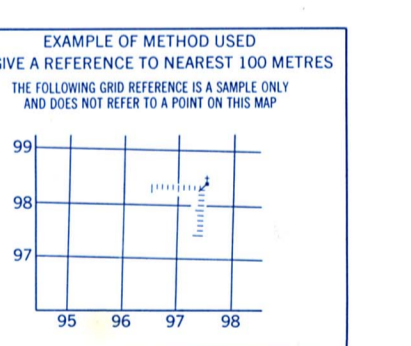
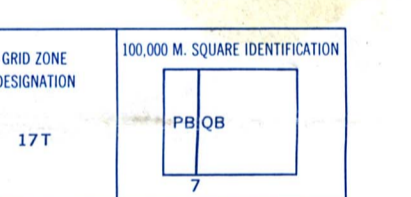
EDITION 2



Relief to this map as: 31 L/9 EDITION 2 MCE SERIES A 761



ONE THOUSAND METRE GRID
UNIVERSAL TRANSVERSE MERCATOR GRID
ZONE 17



REFERENCE POINT	CHURCH (see above)
EASTING: Road number on grid line immediately to left of point Estimate tenths of a square from this line toward the point	97
NORTHING: Road number on grid line immediately below point Estimate tenths of a square from this line toward the point	97.5
	98
	98.5
	99

EXAMPLE MILITARY GRID REFERENCE: 979884
Nearest 100m grid reference: 97.9884 metres (about 98 metres)

BROWN NUMBERED TICKS INDICATE THE 1000 METRE U.T.M. GRID ZONE 18

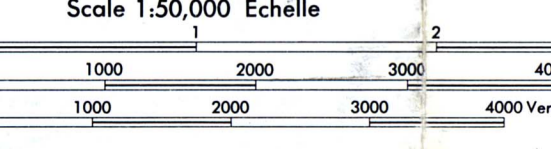
Produced by the SURVEYS AND MAPPING BRANCH, DEPARTMENT OF ENERGY, MINES AND TECHNOLOGY. Digitized from aerial photographs taken in 1967. Culture check 1970. Printed 1972.

Copies may be obtained from the Canada Map Office, Department of Energy, Mines and Resources, Ottawa, or your nearest map dealer.

Roads: loose or stabilized surface, all weather; gravel; aggregate, toute saison; gravel; aggregate, toute saison; loose surface, dry weather and unclassified streets; cart track; trail or portage.

Red - Project #1
Black - Project #2
31 49

LAC BLEU
TÉMISCAMINGUE COUNTY - COMTE DE TÉMISCAMINGUE
QUÉBEC



This Professional Map is equivalent to a standard map in accuracy of content.
Some names on this map are not yet official. Corrections or additions are invited by the Surveys and Mapping Branch.

Contour Interval 50 Feet
Elevations in Feet above Mean Sea Level
North American Datum 1922
Transverse Mercator Projection

Distance of Curves in Feet
Elevations in Feet above Mean Sea Level
North American Datum 1922
Projection Transverse de Mercator