

Military users, refer to this map as: Réference de la carte pour usage militaire: SERIES A761 SERIE MAP 31K/13W CARTE EDITION 2 MCE EDITION

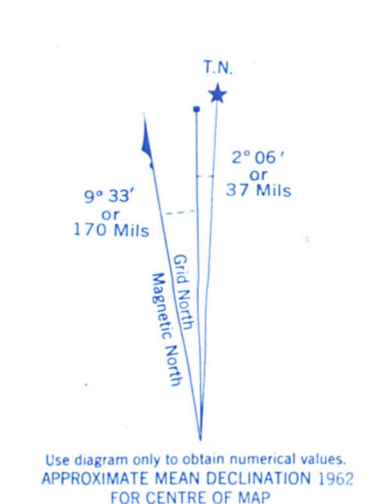
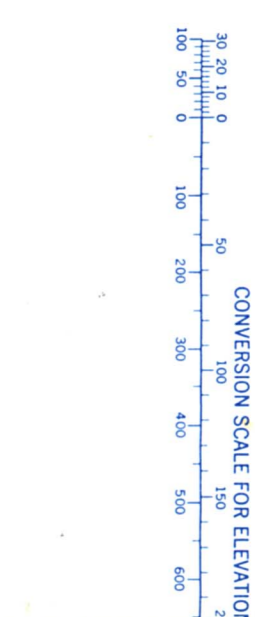
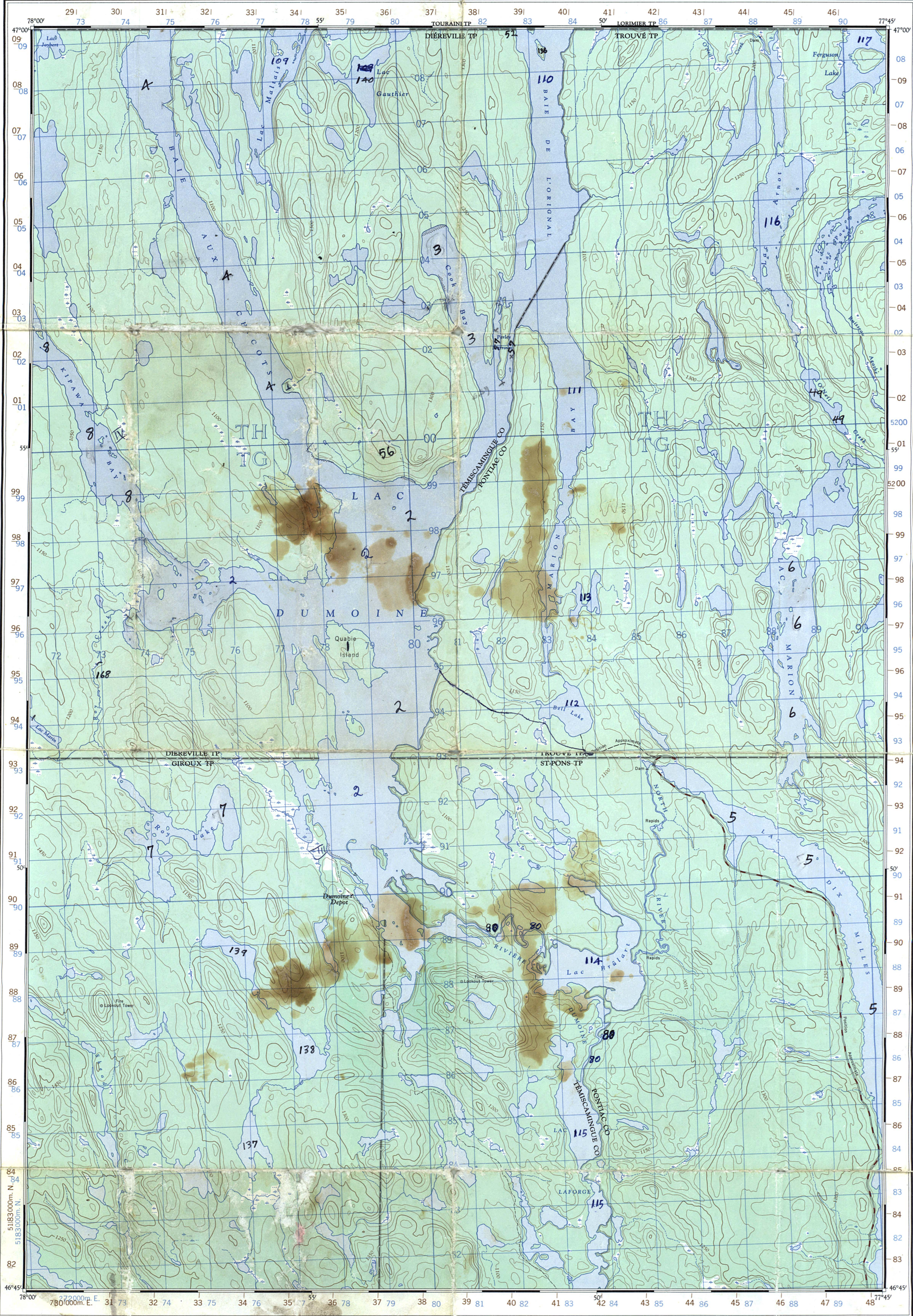


Table with grid zone designation (18T) and square identification (TH TG 52). It includes instructions on how to use the grid for reference and a small diagram of the grid square.

ONE THOUSAND METRE UNIVERSAL TRANSVERSE MERCATOR GRID ZONE 18

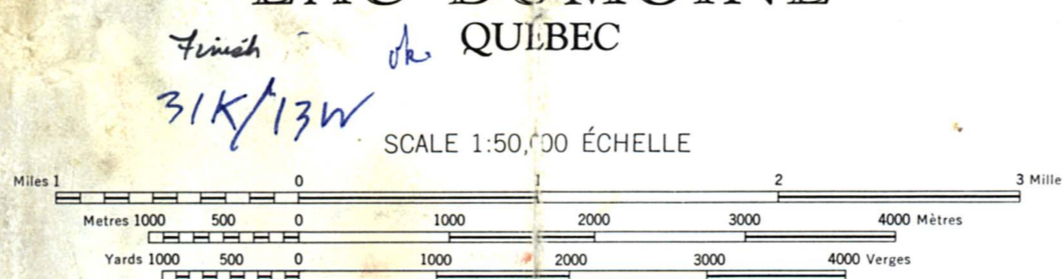
BROWN NUMBERED TICKS INDICATE THE 100 METRE U.T.M. GRID ZONE 17

Produced and printed by the SURVEYS AND MAPPING BRANCH, DEPARTMENT OF MINES AND TECHNICAL SURVEYS, 1962, from air photographs taken in 1950.

Copies may be obtained from the Canada Map Office, Department of Energy, Mines and Resources, Ottawa, or your nearest map dealer.

© Canada Copyrights Reserved 1974

LAC DUMOINE QUÉBEC



Legend table listing symbols for roads, railways, water features, and other geographical elements in both English and French.

CONTOUR INTERVAL 50 FEET Elevations in Feet above Mean Sea Level North American Datum 1927 Transverse Mercator Projection

ÉQUIDISTANCE DES COURBES: 50 PIEDS Élévations en pieds au-dessus du niveau moyen de la mer Réseau géodésique nord-américain unifié (1927) Projection transverse de Mercator

Some names on this map are not yet official. Corrections or additions are invited by the Surveys and Mapping Branch.

Certains noms inscrits sur cette carte ne sont pas encore officiels. La Direction des levés et de la cartographie saurait gré au public de lui signaler corrections et additions.

Établi et imprimé par la DIRECTION DES LEVÉS ET DE LA CARTOGRAPHIE, MINISTÈRE DES MINES ET DES RELEVÉS TECHNIQUES en 1962, d'après les photographies aériennes prises en 1950.

Ces cartes sont en vente au Bureau des Cartes du Canada, Ministère de l'Énergie, des Mines et des Ressources, Ottawa, ou chez le vendeur le plus près.

© Canada 1974. Tous droits réservés.

Legend table listing symbols for buildings, schools, churches, mines, and other man-made or natural features in both English and French.

26456- ENQUÊTE KIPAWA (PROJET 1) YOUNG, NORMAN - 1980 DOSSIER DES ENQUÊTES EN MILIEU AMÉRINDIEN

LAC DUMOINE 31K/13W EDITION 2

Voir édition 1975 de 31K/13