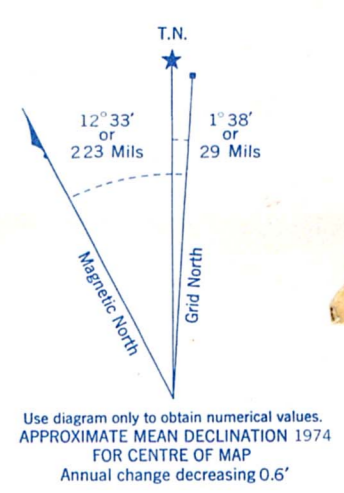
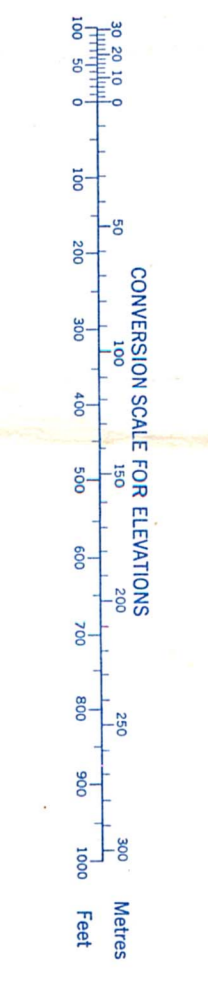
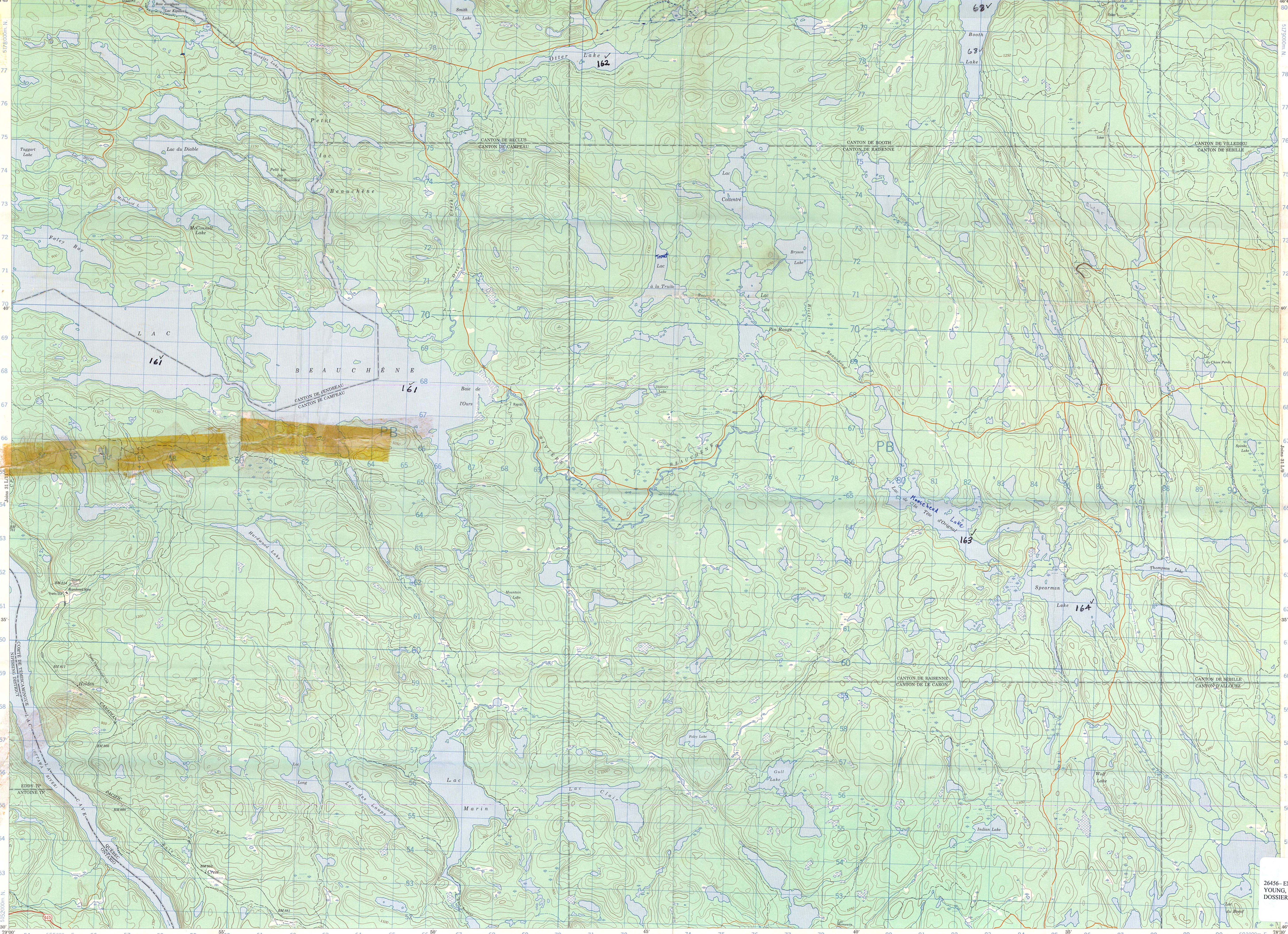


Refer to this map as: 31 L/10 EDITION 2 MCE SERIES A 761



ONE THOUSAND METRE
 UNIVERSAL TRANSVERSE MERCATOR GRID
 ZONE 17

GRID ZONE DESIGNATION	100,000 M. SQUARE IDENTIFICATION
17 T	PB

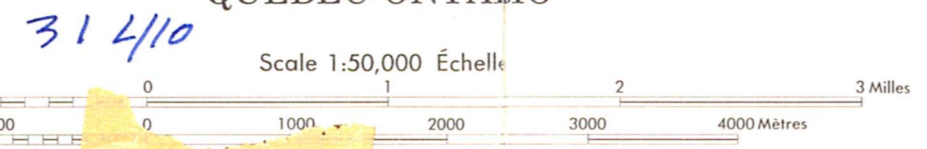
EXAMPLE OF METHOD USED TO OBTAIN GRID REFERENCE TO NEAREST 100 METRES

THE FOLLOWING GRID REFERENCE IS A SIMPLE ONE AND DOES NOT REFER TO A POINT ON THE MAP

99	98	97	96
95	94	93	92

REFERENCE POINT	CHURCH	(in above)
EASTING	Read number on grid line immediately to left of point	97
	Estimate tenths of a square from this line to eastward	97.5
NORTHING	Read number on grid line immediately below point	98
	Estimate tenths of a square from this line to northward	98.5
EXAMPLE GRID REFERENCE	975085	
Nearest under grid reference	100,000 metres (about 63 miles)	

LAC BEAUCHÊNE
 QUÉBEC-ONTARIO



Produced by the SURVEYS AND MAPPING BRANCH, DEPARTMENT OF ENERGY, MINES AND RESOURCES, from aerial photographs taken in 1965. Culture check 1971. Copies may be obtained from the Canada Map Office, Department of Energy, Mines and Resources, Ottawa, or your nearest map dealer. © Canada Copyrights Reserved 1974

Roads:	hard surface, all weather	Roads:	paucal, toute saison	2	highway	2	2
	hard surface, all weather		paucal, toute saison	2			
	loose surface, dry weather and unimproved streets		de gravier, temps sec et routes non classées	2			
	cut track or portage		sentier ou portage	2			

This Provisional Map is equivalent to a standard map in accuracy of content.
 Some names on this map are not yet official. Corrections or additions are invited by the Survey and Mapping Branch.

Cette carte provisoire équivaut à une carte régulière en ce qui concerne la précision de l'information.
 Certains noms inscrits sur cette carte ne sont pas encore officiels. La Direction des levés et de la cartographie salue toute suggestion de leur signifier corrections et additions.

Édité par la DIRECTION DES LEVÉS ET DE LA CARTOGRAPHIE, MINISTÈRE DE L'ÉNERGIE, DES MINES ET DES RESSOURCES, en 1974. Impression en 1974.
 Ces cartes sont en vente au Bureau des Cartes du Canada, Ministère de l'Énergie, des Mines et des Ressources, Ottawa, ou chez le vendeur le plus près.
 © Canada 1974. Tous droits réservés.

26456- ENQUÊTE KIPAWA (PROJET 1)
 YOUNG, NORMAN - 1980
 DOSSIER DES ENQUÊTES EN MILIEU AMÉRINDIEN

Angèle Norman Young
 Kipawa
 31 L/10 1980
 EDITION 2